



**OTAGO**  
Community Trust  
**New Zealand**  
**MASTERS GAMES**

*Great sport, great mates, great memories!*

DUNEDIN | 3 - 11 FEB 2018 [www.nzmg.com](http://www.nzmg.com)



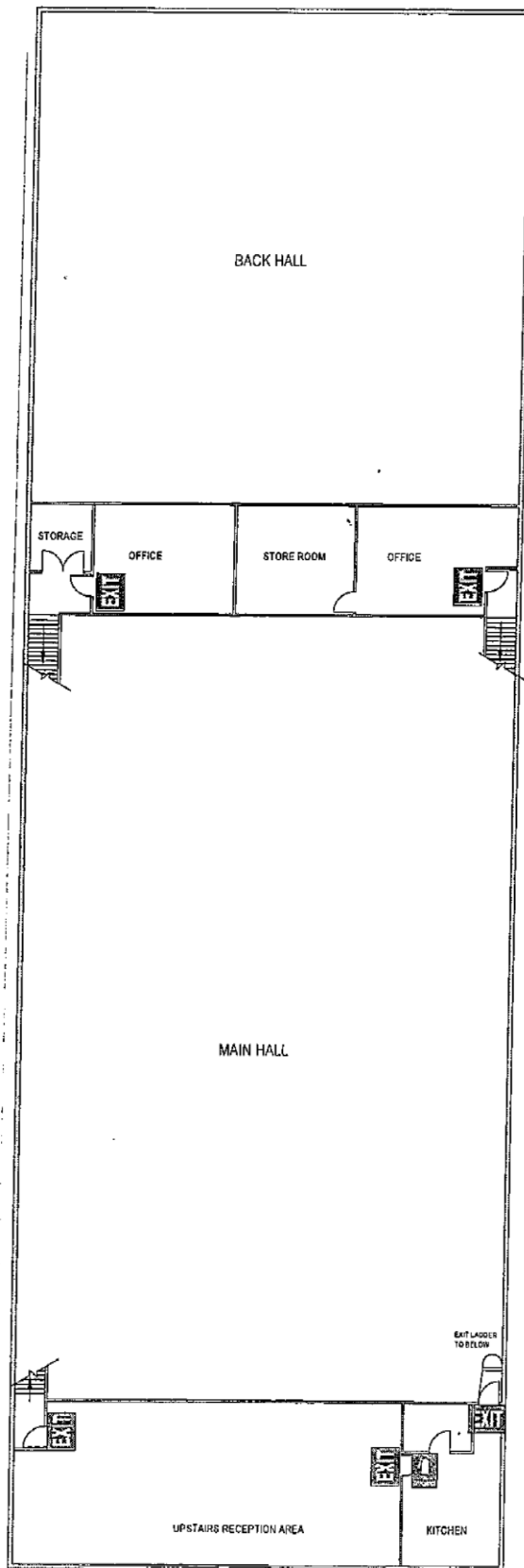
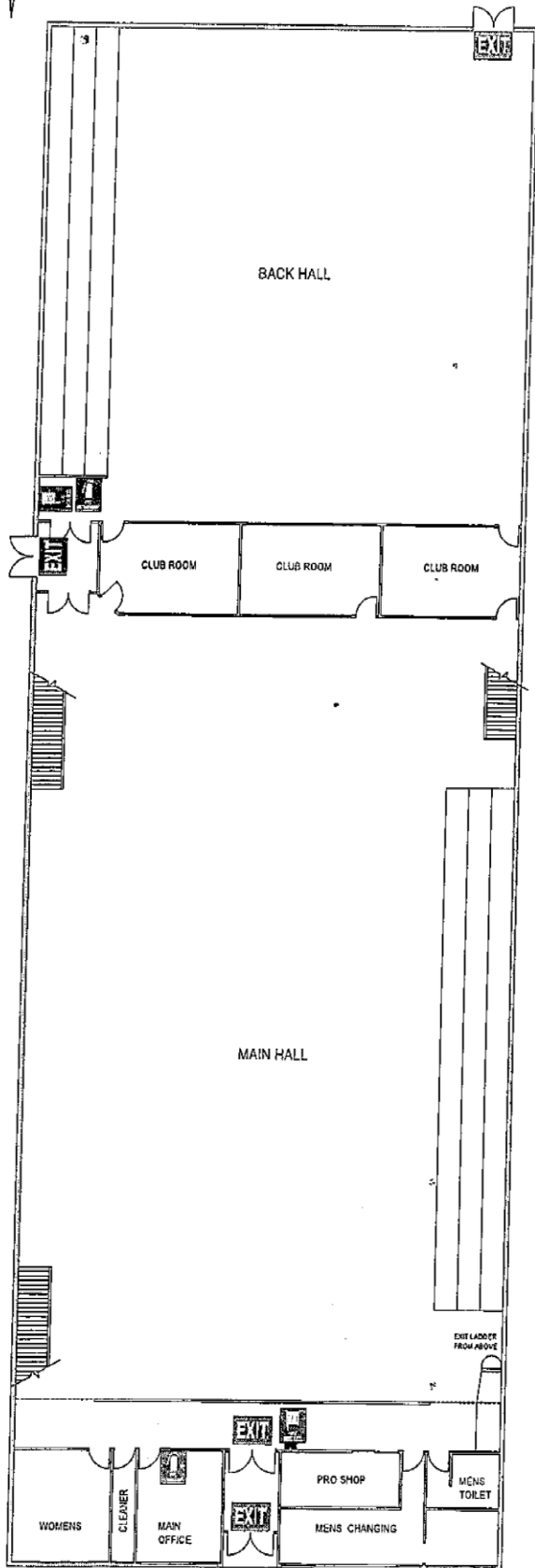
**BADMINTON**  
**3 - 6 February 2018**

## Welcome to Otago Community Trust NZ Masters Games

### House Keeping-

- **Toilets and Showers** are at the front of the hall.
- **Emergency Exits** – front door entrance, back door at the side of court 8, the door between the two halls, and the fire escape from the upstairs lounge-exit through the kitchen.
- **Fire Alarm** – In the event that the alarm sounds please exit the hall immediately and safely and assemble in the Dunedin Ice Stadium car park.
- **Car parking** – Players are asked not to park in the Dunedin Ice Stadium car park as this is a private car park, but the car park beyond the stadium is available to all players.
- **Ice** is available in the freezer at the bottom of the stairs.
- **Refreshments** – Coffee/tea and light refreshments will be available from the canteen upside between the hours of 10.00am – 4.00pm. This will be a cash only facility.
- **Water Dispenser** – front of hall
- **Restranging** – see Jim Hoffman
- **Order of Play** – Each court will have a draw sheet, umpires sheets and an order of play. Results are to be recorded on the draws and all paper work is to be handed in to the office at the end of the tie.
- Please be aware that due to the size of some events the scoring system and game format may vary from that advertised.

**Go play and enjoy and we wish you every success.**



## Playing Conditions

- The Rules of Play shall be those of the BWF. The Tournament Controller's decision on all questions as to the Rules of Play and Laws of Badminton will be final.
- Age groups are set, you can play down but you can not play up.
- The Teams event will consist of 4 matches 1 men's doubles, 1 women's doubles and 2 mixed doubles.
- Round Robins will be played in the Singles, Doubles and Mixed Events.
- There are small entries in some age groups. We have (to ensure that you get as many matches as possible) grouped some of the age groups together and in some cases have moved players up an age group if they are on the cusp of an age change. This is to ensure a balanced tournament. When possible the first match you play will be the medal match for your age group.
- Where there are pools played within an event 1<sup>st</sup> in each box will play for gold and silver, 2<sup>nd</sup> will play off for bronze.
- All players must wear regulation badminton attire. Non marking shoes must be worn.
- There are no lets within the playing area.
- Please use the courtside baskets at all times. No clothing to be left on floor
- Used shuttles are to be placed in the baskets provided under the umpires stand.
- Only sealed drink bottles are allowed courtside.
- All matches are to be umpired.
- All matches will be best of three games to 21 points or as stated on official draw/score sheets.
- Breaks in all matches to 21 points will be as the Rally Point Scoring System at 11 points.
- All on-court injuries are to be reported to the tournament controller.

## Links to Draws and Results

**Teams Link** - <http://www.tournamentsoftware.com/sport/draw.aspx?id=006DD4AD-0EAC-4B89-87EA-4FD46CCEBEB&draw=1>

**Individual Link** - <http://www.tournamentsoftware.com/sport/tournament.aspx?id=F1649A92-12D2-4A7D-B614-B3F62E915A09>

2018 Court Allocation and Timetable									
		Court 1	Court 2	Court 3	Court 4	Court 5	Court 6	Court 7	Court 8
Saturday 03/02/2018 <b>Teams</b>	9.00am	65- 69/70+	65- 69/70+	55-59	40-45	45-49	35-39	35-39 50-54	50-54
Sunday 04/02/2018 <b>Doubles</b>	9.00am	35-39 Women	35-39 Men	45-49 Women	45-49 Men	55-59 Women	55-59 Men	65-69 Women	65-69 Men
Sunday 04/02/2018 <b>Doubles</b>	1.30pm	40-44 Women	40-44 Men	40-44 Men	50-54 Women	50-54 Women	50-54 Men	70+ Women	70+ Men 60-64 Men
Monday 03/02/2018 <b>Singles</b>	9.00am	65- 69/70+ Women	65- 69/70+ Men	65- 69/70+ Men	45-49 Women	55-59 Men	55-69 Men	Spare	35-39 Men
Monday 03/02/2018 <b>Singles</b>	1.30pm	50-54 Women	50-54 Women	60- 64/65-69 Men	35- 39/40-44 Women	35- 39/40-44 Women	40-44 Men	40-44 Men	50-54 Men
Tuesday 04/02/2018 <b>Mixed</b>	9.00am	35-39	35-39	Spare	55-59	55-59	65-69	65-69	45-49
Tuesday 04/02/2016 <b>Mixed</b>	1.30pm	40-44	40-44	50-54	50-54	50-54	60-64	70+	70+
Subject to change if required									

# Important Contact Details

**Angus Badminton Centre:** (03) 455 5603 Victoria Road  
0274 465 866 (After Hours)

**Event Director:** 0274 465 866 After hours

**Dunedin Urgent Doctors Medical and Accident Centre:** 479 2900 **Open 8.00am – 10.00pm**  
No appointments necessary  
18 Filleul Street

**Sport Injury Clinic** 455 3155 **OPEN 8.30am – 5.00pm**  
0274506510 Edgar Sports Centre  
Teviot Street

**In case of extreme emergency dial 111**

## Other Contact

**Restringing Service:** Jim Hoffman Angus Badminton Centre

